

TECHNOLOGY AGENCY  
OF THE CZECH REPUBLIC



The Czech Republic has always been a country of innovators. We are the nation that invented the lightning rod, the ship propeller and contact lenses, and first described blood types. It has left its mark on all aspects of technologies from holograms through nanofibres to cybernetics and astrophysics. Today the scientists benefit from the National Supercomputing Centre IT4 Innovation. The ELI Beamlines is a pan-European project representing a unique tool of support of scientific excellence in Europe, operating the world's most intense laser system.

## A WORD FROM THE CHAIRMAN



Dear readers,

Our mission at the Technology Agency is to support applied research. We're trying to be a modern institution with an open approach that reflects and adapts to the conditions on the market and the needs of researchers.

The technology agency was founded in 2009. Since its founding, it has become a highly professional institution that currently employs more than 100 people. Every year, it supports hundreds of research projects by small, medium-sized and large businesses, research organisations and universities with a sum that exceeds EUR 157 million. We do this in programmes supporting local as well as international research collaboration. I'm glad that the Agency has become a highly respected institution that allocates state funds for applied research and innovation.

A handwritten signature in black ink, which appears to read 'Konvalinka'. The signature is fluid and cursive, written in a professional style.

Petr Konvalinka  
TACR Chairman

T A ABOUT  
C R TACR

The Technology Agency of the Czech Republic (TACR) is the main provider of state funding for research and innovation. Its objective is to connect together and promote cooperation between research organisations and business to ensure that the results of applied research find their use in practice. Funded projects generate unique products, patents and other outputs that help quickly apply the results of research in practice.



TACR is a member of the Taftie European network of innovation agencies which gives us the opportunity to share experience and information with partner agencies that also support research, development and innovations in various parts of the world.

2010 — TACR joined Taftie

2017 — TACR had the honour of chairing Taftie

SINCE THE TACR  
FOUNDATION

**EUR 1,1 billion**

WAS INVESTED BY THE STATE IN APPLIED  
RESEARCH THROUGH TACR

These funds led to further investments of EUR 556 million  
into applied research **from other sources**

**3 422**

RESEARCH ORGANISATION PROJECT  
PARTICIPANTS SUPPORTED

**3 099**

BUSINESS PROJECT PARTICIPANTS  
SUPPORTED

**2 530**

PROJECTS FUNDED

**67%**

AVERAGE FUNDING INTENSITY

**117**

FULL-TIME EMPLOYEES

**12**

PROGRAMMES SUPPORTING  
APPLIED RESEARCH  
AND INNOVATIONS

\* In TACR public tenders

# POSITION IN THE R&D ECOSYSTEM

GOVERNMENT  
OF THE CZECH  
REPUBLIC

Research, Development  
and Innovation Council

Institutional  
support

MINISTRIES

Targeted  
support

CZECH ACADEMY  
OF SCIENCES

Institutional  
support

TECHNOLOGY  
AGENCY  
OF THE CZECH  
REPUBLIC

Targeted  
support

CZECH SCIENCE  
FOUNDATION

Targeted  
support

# MINISTRIES

Ministry of Education, Youth and Sports

Czech Office for Surveying, Mapping and Cadastre

Ministry of Agriculture

Office of the Government of the Czech Republic

Ministry of Transport

Ministry of the Interior

Ministry of Defence and Armed Forces

Ministry of the Environment

Ministry of Industry and Trade

Ministry of Foreign Affairs

Ministry of Health

Ministry of Labour and Social Affairs

Administration of State Material Reserves

Ministry of Regional Development

The Czech Mining Authority

State Institute for Nuclear Safety

Energy Regulatory Office

Czech Statistical Office

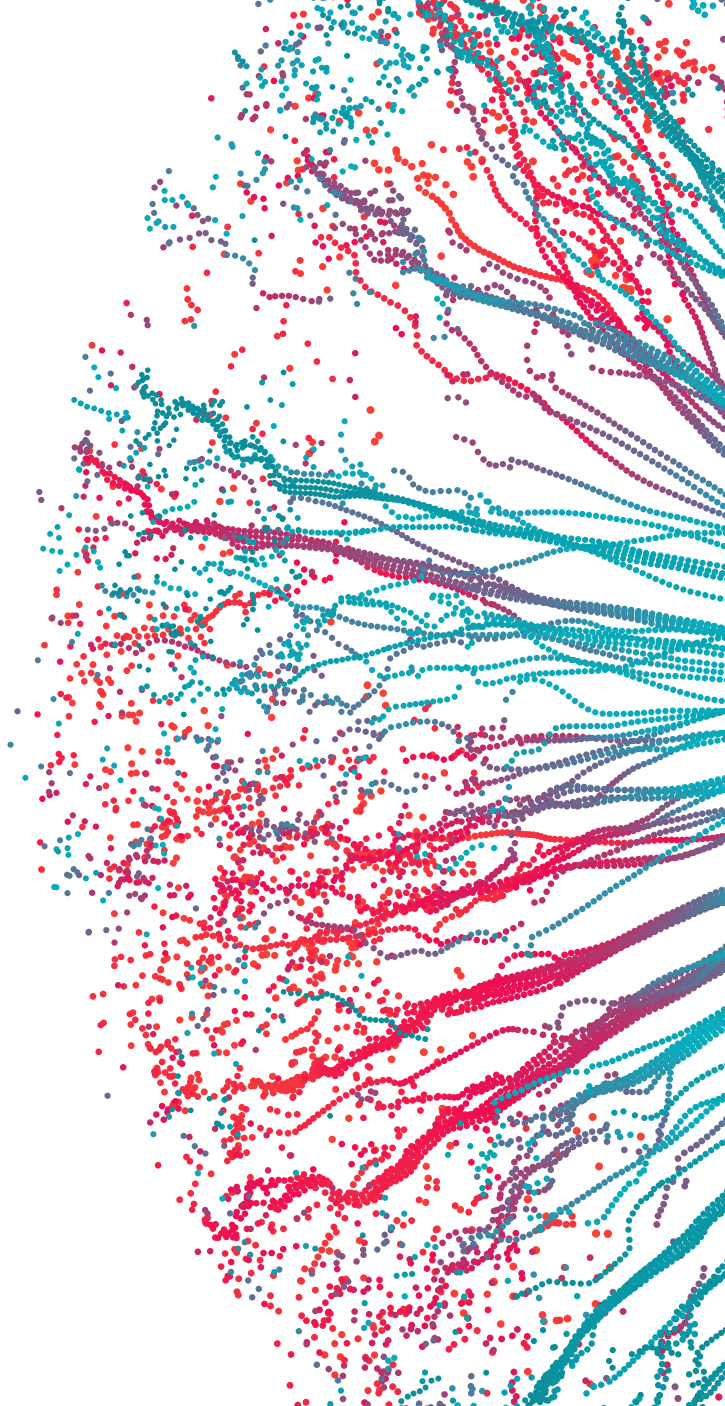
All providers of targeted support

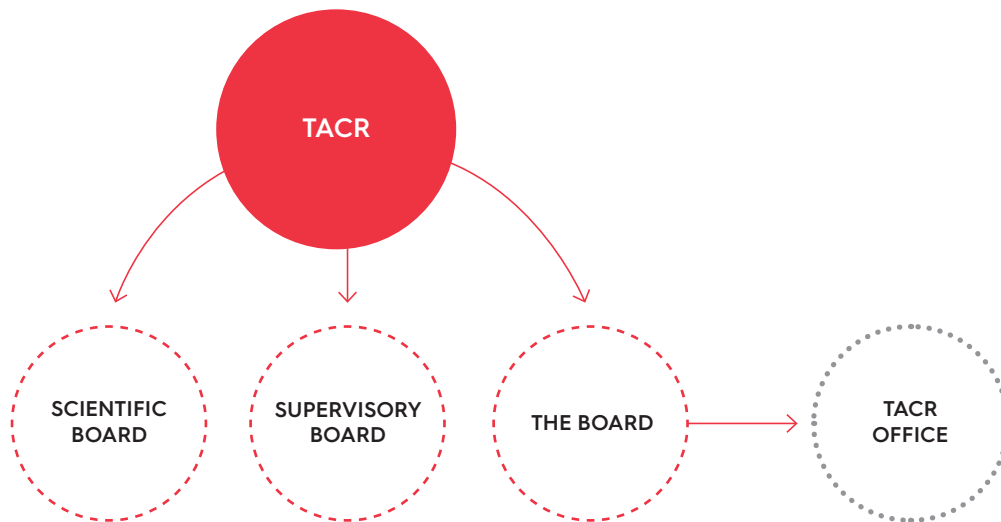


TACR

# HOW TACR WORKS

The Agency is led by the Chairman, the TACR Board, the Scientific Board and the Supervisory Board. The TACR Office provides support to these bodies and it is also in charge of organisational and administrative activities for programmes.





### SCIENTIFIC BOARD

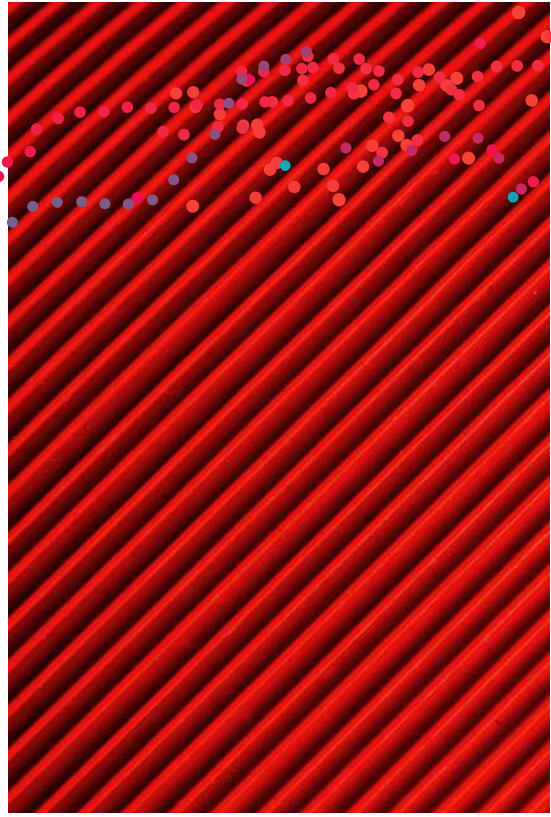
The Scientific Board decides on the conceptual focus of the Agency. Its tasks include developing the TACR's strategy for the next period, choosing the focus of newly prepared programmes, nominating people for TACR and evaluating the results of TACR programmes.

### SUPERVISORY BOARD

The main task of the Supervisory Board is to oversee the distribution of TACR funds. The Supervisory Board also processes complaints and submits its opinions and recommendations to the Board.


### THE BOARD

The Board is the Agency's executive body that deals with conceptual and strategic activities resulting from the meetings of the Scientific Board, with recommendations and suggestions resulting from the meetings of the Supervisory Board, with operational activities resulting from the functioning of the TACR Office and with tasks defined in government regulations.



## **TACR OFFICE**

**THE TACR OFFICE IMPLEMENTS ALL OF THE AGENCY'S ACTIVITIES AND PROVIDES SUPPORT TO OTHER TACR BODIES. EMPLOYEES OF THE TACR OFFICE ARE RESPONSIBLE FOR THE PREPARATION, DOCUMENTATION, AND IMPLEMENTATION OF PROGRAMMES.**



**The TACR Office is in charge of following activities and departments:**

**0. CABINET SECTION**

- general agenda and external relations

- HR Department
  - Legal Department
  - PR Unit
- 

**1. PROGRAMME DEVELOPMENT AND MANAGEMENT SECTION**

- preparation of new Agency programmes
- international cooperation
- evaluation of TACR programmes
- reporting and exporting data related to TACR activities
- innovation potential mapping

- Strategy and Analysis Department
- Analysis Unit
- Programme Unit
- Evaluation Unit
- International Cooperation Unit

**2. PROGRAMME IMPLEMENTATION SECTION**

- proposal implementation in approved Agency programmes
- evaluation and selection processes and support of selected projects
- continued support of project implementation up to successful completion

- Call for Proposals Department
  - Project Management Department
  - EEA and Norway Funds Department
- 

**3. OPERATIONAL SECTION**

- coordination of all support bodies that keep the organisation running
- Economic Department
  - Project Controlling Department
  - Service Department
  - Expert Management Department
  - Internal Evaluators Department

**4. IMPLEMENTATION OF DEPARTMENTAL NEEDS SECTION**

- alternative methods of project administration to focus on departmental research needs through public procurement
  - umbrella section for activities related to research in the public interest
- 

**5. PROJECT SUPPORT SECTION**

- development activities support implemented by means of internal projects
- implementation of schemes and international cooperation in the European research and innovation support programme Horizon 2020
- coordination of contributions to projects implemented across the Agency

- Department of Counselling and Communication Support
- Project Office Unit
- Department of Development Activities
- ICT Department
- Information Systems and Methodological Support Unit

# PROGRAMME OVERVIEW



## ETA PROGRAMME

→ to strengthen the social and humanistic aspects of applied research activities

Programme duration **2018 – 2023**

Program expenditures from state budget **EUR 95 mil.**

Project duration **at least 12 months**

Average funding intensity for the programme **80 %**

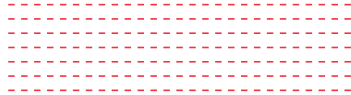
Applicants **Research organizations and enterprises, other physical and legal entities under public and private law**



### INTERESTING PROJECT

Prototype of Smart Seating Furniture for the New Permanent Design Exhibition at the Museum of Decorative Arts in Prague.





## ZETA PROGRAMME

→ to involve the younger generation of researchers and spur practical utilisation of their results

Programme duration	<b>2017–2025</b>
Program expenditures from state budget	<b>EUR 28,6 mil.</b>
Project duration	<b>12 to 24 months</b>
Max funding intensity for the programme	<b>80 %</b>
Applicants	<b>Research organizations and enterprises</b>



### INTERESTING PROJECT

Application of games in virtual environments combined with biofeedback for interactive training of mindfulness.



## THÉTA PROGRAMME

→ to support the transformation and modernisation of the energy sector according to approved strategic documents

### SUBPROGRAMMES

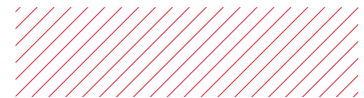
- Research in the Public Interest
- Strategic Energy Technologies
- Long-Term Technological Perspectives

Programme duration	<b>2018–2025</b>
Program expenditures from state budget	<b>EUR 158,9 mil.</b>
Project duration	<b>36 months</b>
Average funding intensity for the programme	<b>70 %</b>
Applicants	<b>Research organizations and enterprises, other physical and legal entities under public</b>



### INTERESTING PROJECT

Innovative ventilation unit with thermoelectric modules for control of air temperature.



## GAMA 2 PROGRAMME

→ to verify the results of research for practical application and commercial use

Programme duration	<b>2020–2022</b>
Program expenditures from state budget	<b>EUR 218,6 mil.</b>
Max. Project duration	<b>36 months</b>
Max funding intensity for the programme	<b>100 %</b>
Applicants	<b>Research organizations and enterprises</b>

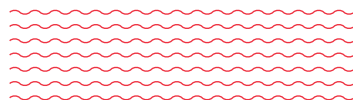


### INTERESTING PROJECT

An adaptive personal trainer that helps children who are starting to read (including those with dyslexia, dysphasia etc.), foreigners learning to read and partially also stroke patients.



# INTERNATIONAL COOPERATION SUPPORT



## DELTA 2 PROGRAMME

→ to support international  
cooperation in applied research

Programme duration	<b>2020–2025</b>
Program expenditures from state budget	<b>EUR 48,6 mil.</b>
Maximum project duration months	<b>36</b>
Maximum project funding intensity	<b>74 %</b>
Applicants	<b>Research organizations and enterprises</b>



### INTERESTING PROJECTS

Implementation of applied  
research in cybernetic security. Created a public honeypot  
where it will be possible  
to redirect attacks from  
end devices to increase  
security for citizens.



Creation of innovative  
implants through 3D  
printing that can last  
in the body for more  
than 40 years without  
failure.

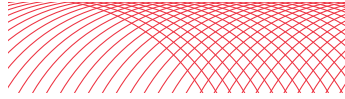




## KAPPA PROGRAMME

→ to support international cooperation between Czech entities and partners from Norway, Iceland, and Liechtenstein while interconnecting research organisations within the application sphere

Programme duration	<b>2020–2024</b>
Program expenditures from state budget	<b>EUR 4,6 mil.</b>
Average project duration	<b>24–40 month</b>
Average funding intensity for the programme	<b>80 %</b>
Applicants	<b>Research organizations and enterprises, other natural and legal persons</b>



## ERA-NET COFUND CALLS

→ one of the opportunities for establishing international cooperation in applied research and innovation is getting involved in joint calls in the ERA-NET Cofunds of Horizon 2020. These schemes give the providers from the individual member countries (such as the TACR) the opportunity to issue joint calls on agreed themes in various specified areas

### AQUATICPOLLUTANTS

pollutants and pathogens present in water resources

### BIODIVCLIM

biodiversity and climate change

### BIODIVRESTORE

conservation and restoration of degraded ecosystems and their biodiversity

### ERA-MIN

raw materials research

### EURONANOMED

nanomedicine research

### GENDER-NET PLUS

gender equality and gender mainstreaming in research and innovation

### CHIST-ERA

information and communication technologies (ICT)

### M-ERA.NET

materials research and innovation

### QUANTERA

quantum technologies



# NEW PROGRAMMES OF CZECH MINISTRIES

In 2019, TACR expanded its programme portfolio by taking control over these departmental programmes for the Ministry of Industry and Trade, the Ministry of the Environment and the Ministry of Transport. The provider of implementation of all three departmental programmes is TACR. The implementation of the above programmes in the Agency's system will allow the applicants and subsidy beneficiaries in various programmes to apply for support in the same manner, under the same conditions, and in the same place.



## TREND PROGRAMME

MINISTRY OF INDUSTRY AND TRADE

→ to increase competitiveness of Czech companies by supporting industrial research and experimental development projects and promotion of their results

### SUBPROGRAMMES

- Technology Leaders
- Newcomers

Programme duration **2020–2027**

Program expenditures from state budget **EUR 385,5 mil.**

Project duration **12 – 60 months**

Average funding intensity **65 %**

Applicants **Research organizations and enterprises**



## TRANSPORT 2020+ PROGRAMME

MINISTRY OF TRANSPORT

→ to develop the transportation sector in a way that reflects social needs

Programme duration **2020–2026**

Program expenditures from state budget **EUR 77,5 mil.**

Project duration **12 – 48 months**

Average funding intensity **80 %**

Applicants **Research organizations and enterprises**



## ENVIRONMENT FOR LIFE PROGRAMME

MINISTRY OF ENVIRONMENT

→ to secure a healthy, high-quality environment and sustainable use of resources

### SUBPROGRAMMES

- Operative Research in the Public Interest
- Environmental Innovations, Technologies and Procedures
- Long-Term Environmental and Climate Perspectives

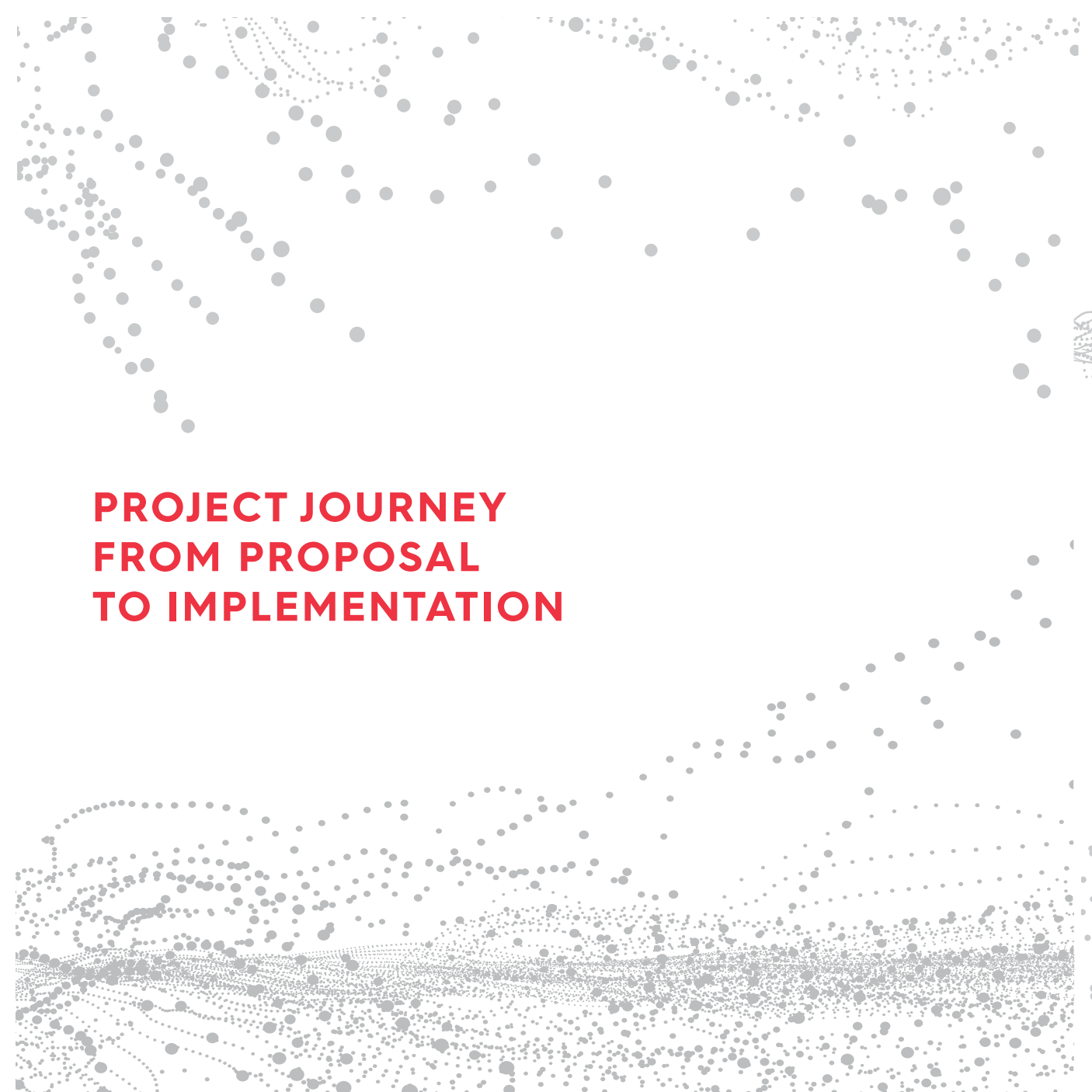
Programme duration **2020–2026**

Program expenditures from state budget **EUR 153,6 mil.**

Average project duration **30 months**

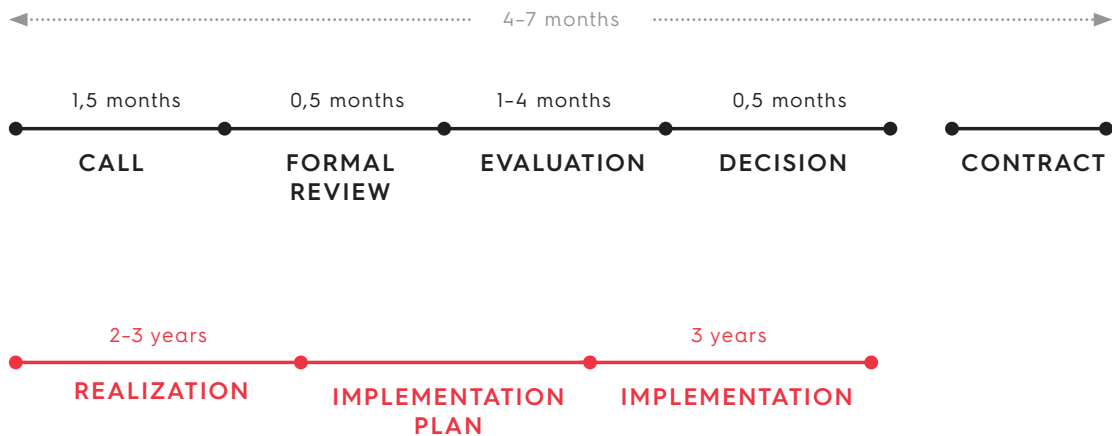
Maximum amount of project funding **100 %**

Applicants **Research organizations and enterprises, other physical and legal entities under public and private law**

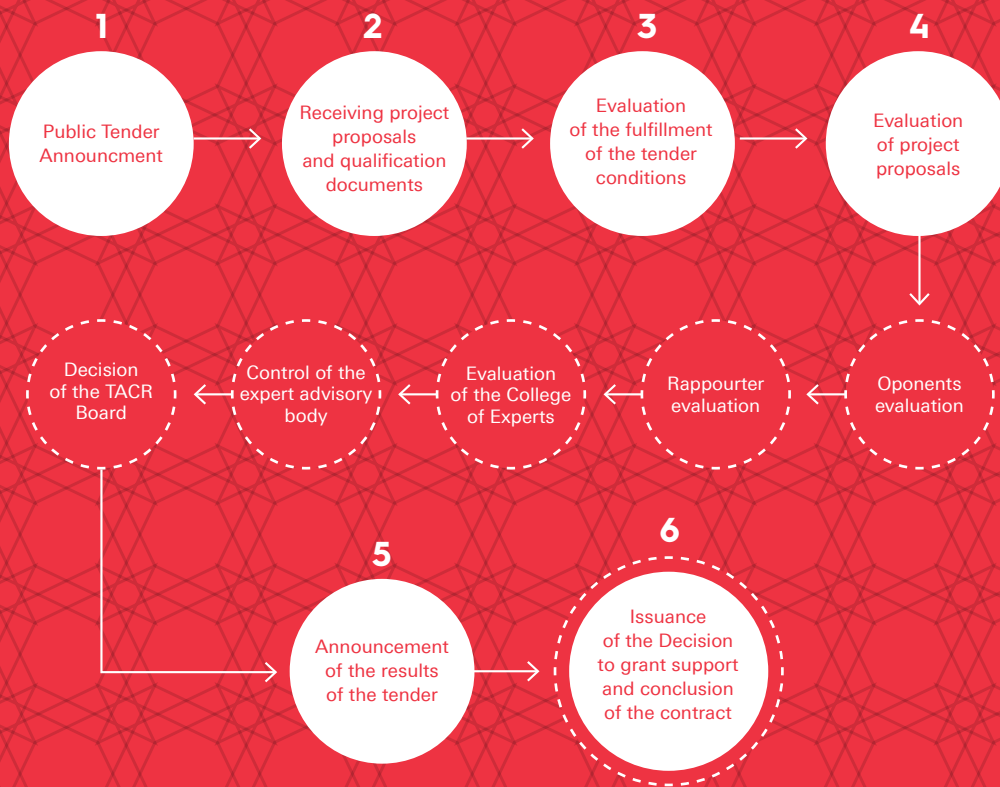


**PROJECT JOURNEY  
FROM PROPOSAL  
TO IMPLEMENTATION**

# PROJECT LIFE CYCLE



# PROJECT PROPOSAL EVALUATION PROCESS



Candidates and beneficiaries can use the helpdesk at any time.

# WE MAKE OUR AND YOUR WORK MORE EFFICIENT AND SIMPLER



STARFOS

## STARFOS

- full-text search engine for research and innovation projects supported from public funds of the Czech Republic
- provides detailed information on each project including researchers, funding and achieved results



I S  
T A

## ISTA

- information system for the entire process of targeted support provisioning
- provides connection and links to the relevant public administration registers, state information systems in order to streamline the functioning of the public administration concerning the provision of state aid to R&D



#TACRvDatech

## DATA VISUAL

- simple and user friendly presentation of information on the support of applied research and innovation form #TAČRvDatech (#TACRinData)
- the aim is to provide information about Czech applied research in infographics



INKAviz

## INKAVIZ

- online presentation of data from INKA (Innovation Capacity) mapping which examines the innovation potential of Czech entities in collaboration with individual regional branches





Our clients can discuss the development possibilities of their research activities with our representatives in most regional capitals who will guide them through their options in receiving state support for applied research and innovation.

**T A**  
**C R**

Technology Agency  
of the Czech Republic  
Evropská 1692/37  
160 00 Prague 6

E: [info@tacr.cz](mailto:info@tacr.cz)  
T: 234 611 111

[www.tacr.cz/en](http://www.tacr.cz/en)

Helpdesk: [www.tacr.cz/hesk](http://www.tacr.cz/hesk)

## **TACR REGIONAL OFFICES**

### **PRAGUE AND CENTRAL BOHEMIA**

Evropská 1692/37, 160 00 Prague 6  
E: [praha-rkm@tacr.cz](mailto:praha-rkm@tacr.cz)  
T: +420 778 114 277

### **SOUTH MORAVIAN REGION**

Holandská 3, 639 00 Brno – Štýřice  
E: [brno-rkm@tacr.cz](mailto:brno-rkm@tacr.cz)  
T: +420 778 727 116

### **VYSOČINA REGION**

Komenského 31, 586 01 Jihlava  
E: [jihlava-rkm@tacr.cz](mailto:jihlava-rkm@tacr.cz)  
T: +420 770 184 405

### **LIBEREC REGION**

U Jezu 525/4, 460 01 Liberec  
E: [liberec-rkm@tacr.cz](mailto:liberec-rkm@tacr.cz)  
T: +420 770 184 404

### **MORAVIAN-SILESIA REGION**

Technologická 372/2,  
708 00 Ostrava – Pustkovec  
E: [ostrava-rkm@tacr.cz](mailto:ostrava-rkm@tacr.cz)  
T: +420 724 346 669

### **ÚSTÍ NAD LABEM REGION AND KARLOVY VARY REGION**

Mírové náměstí 34,  
400 01 Ústí nad Labem  
E: [usti-rkm@tacr.cz](mailto:usti-rkm@tacr.cz)  
T: +420 770 191 394

### **ZLÍN AND OLOMOUC REGION**

Vavrečkova 5262, 23. budova areálu  
Svit 761 01 Zlín  
E: [zlin-rkm@tacr.cz](mailto:zlin-rkm@tacr.cz)  
T: +420 770 180 457

### **PARDUBICE AND HRADEC KRÁLOVÉ REGION**

K Vinici 1256, 530 02 Pardubice V  
E: [pardubice-rkm@tacr.cz](mailto:pardubice-rkm@tacr.cz)  
T: +420 777 331 059



